

M Manhattan School of Music VIRTUAL GALA



Two-time Grammy Award Winner
ISABEL LEONARD
Emcee

“Together, Wherever We Are”

A star-studded evening with performances by MSM’s talented students, faculty, and alumni from across the globe

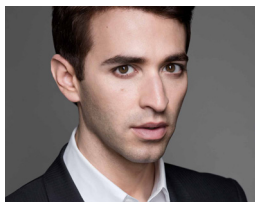
WEDNESDAY, MAY 19, 2021

6:30 PM LIVE BROADCAST 7:30 PM BREAKOUT ROOMS

featuring



Grammy Award Winner & Oscar Nominee
TERENCE BLANCHARD
(HonDMA '17)



Grammy Award Nominee
ANTHONY ROTH COSTANZO
(MM '08)



Grammy Award Nominee
IMANI WINDS



MSM Precollege Students
KEARSTON ('22) & KENDALL ('24) GONZALES



Latin Grammy Nominee & World Series Champion
BERNIE WILLIAMS
(BM '16)

SPONSORSHIP LEVELS

\$100,000 PLATINUM

- **VIP access** for you and up to twenty (20) guests to the **Virtual Gala Broadcast**
 - **Private breakout room**, with a Featured Performer joining you and your guests
 - Premium **Manhattan Fruitier Gift Basket** delivered to you and to your guests with a personal note from you
 - **Verbal recognition** by the MC during the broadcast
 - **Platinum listing** in the digital invitation and program and livestream credits
- \$95,800 of each sponsorship may be tax-deductible.

\$50,000 GOLD

- **VIP access** for you and up to ten (10) guests to the **Virtual Gala Broadcast**
 - **Private breakout room**, with a Distinguished Guest joining you and your guests
 - Premium **Manhattan Fruitier Gift Basket** delivered to you and to your guests with a personal note from you
 - **Verbal recognition** during the broadcast
 - **Gold listing** in the digital invitation and program and livestream credits
- \$47,900 of each sponsorship may be tax-deductible.

\$25,000 SILVER

- Access for you and up to ten (10) guests to the **Virtual Gala Broadcast**
 - **Private breakout room** for you and your guests
 - Premium **Manhattan Fruitier Gift Basket** delivered to you and to your guests with a personal note from you
 - **Silver listing** in the digital invitation and program and livestream credits
- \$22,900 of each sponsorship may be tax-deductible.

\$15,000 BRONZE

- Access for you and up to ten (10) guests to the **Virtual Gala Broadcast**
- Private **breakout room** for you and your guests
- Premium **Manhattan Fruitier Gift Basket** delivered to you and to your guests with a personal note from you
- **Bronze listing** in the digital invitation and program and livestream credits

\$13,350 of each sponsorship may be tax-deductible

\$10,000 BENEFACTOR

- Access for you and up to ten (10) guests to the **Virtual Gala Broadcast**
- Private **breakout room** for you and your guests
- Premium **Manhattan Fruitier Gift Basket** delivered to you and to your guests
- **Benefactor listing** in the digital program and livestream credits

\$8,350 of each sponsorship may be tax-deductible.

TICKETS

\$5,000 (2 TICKETS) / **\$2,500** (1 TICKET)

PATRON

- Access to the **Virtual Gala Broadcast**
- Invitation to join a **Breakout Room**
- **Manhattan Fruitier Gift Basket** delivered to your home
- **Patron Listing** in digital program and livestream credits

\$2,395 of each ticket may be tax-deductible.

\$1,000 (2 TICKETS) / **\$500** (1 TICKET) / **\$250** (MSM ALUMNI ONLY)

SUPPORTER

- Access to the **Virtual Gala Broadcast**
- Invitation to join a **Breakout Room**
- **Manhattan Fruitier Chocolates** delivered to your home
- **Supporter Listing** in digital program and livestream credits

\$440 of each non-alumni ticket may be tax-deductible. \$190 of each alumni ticket may be tax-deductible.

To purchase tickets and tables, and for more information, contact:

Marc Day, Director of Special Events and Donor Stewardship,
at **917-493-4487** or **mday@msmnyc.edu**.

The amount of any gift to Manhattan School of Music that is deductible for federal income tax purposes is limited to the excess of the amount contributed over the value of the goods and services provided to you by MSM. All statements contained herein regarding amounts of gifts that may be deductible are illustrative only. Please consult your tax advisor regarding your specific situation and applicable law.